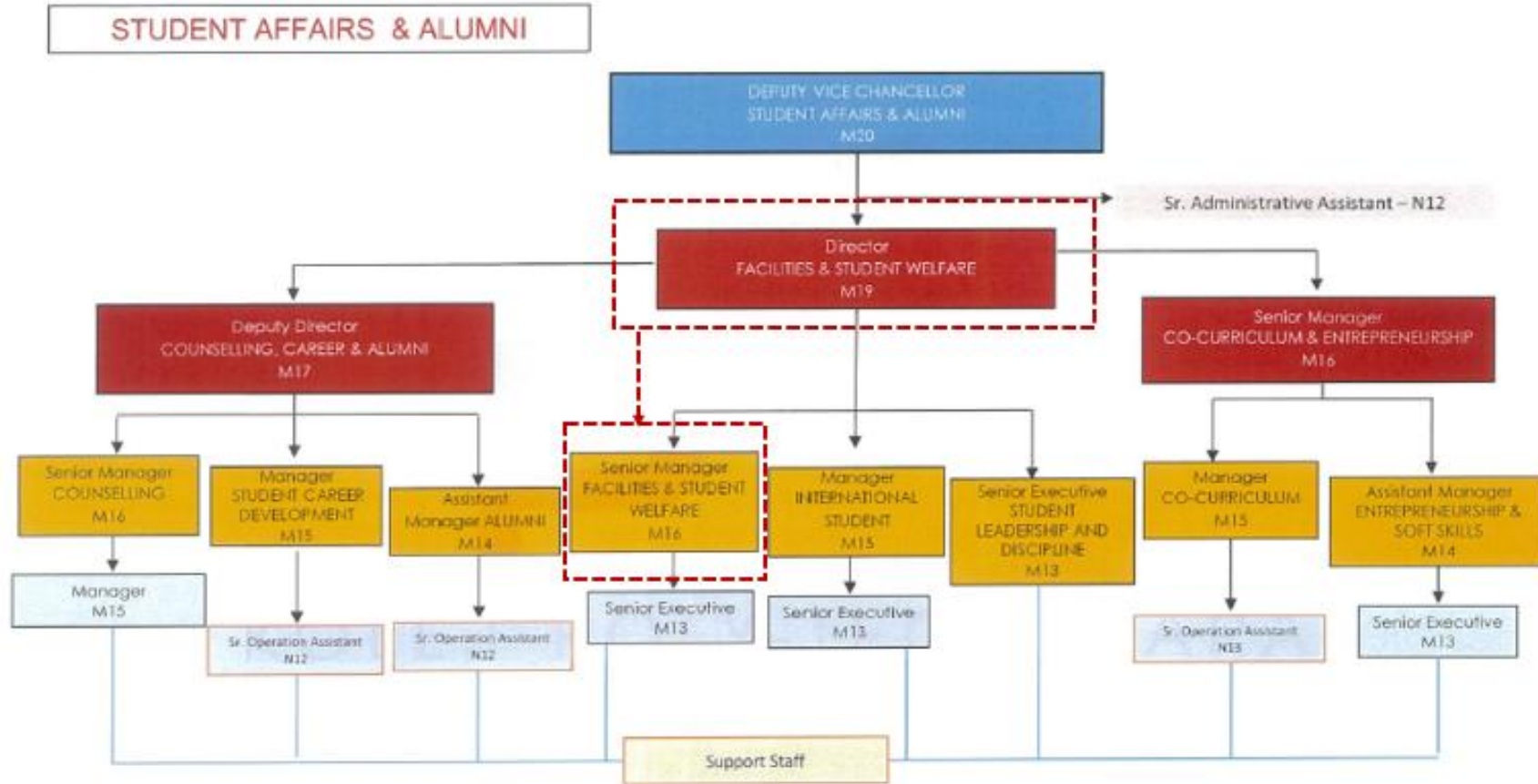


## DISABILITY SUPPORT OFFICE (FACILITIES AND STUDENT WELFARE)



## ASSISTANCE TO DISABLED PEOPLE

### FACILITIES

UPTM provides accessible facilities for people with disabilities, including ramps with gentle slopes, non-slip surfaces, and sturdy handrails to ensure safe movement. These features improve mobility around campus buildings, allowing wheelchair users and others with physical limitations to access entrances and indoor spaces more easily and independently.



Ramps with gentle slopes and non-slip surfaces



Sturdy handrails

## MEDICAL AND WELFARE SUPPORT

The Medical and Welfare Unit at Universiti Poly-Tech Malaysia (UPTM) is dedicated to ensuring the health and well-being of its students through various support services. The unit provides medical assurance letters to hospitals upon students' requests to facilitate treatment access. It also assists in managing medical claims, ensuring that students receive the financial aid or reimbursements they are entitled to.

In addition, the unit offers support to students facing medical problems, ensuring they receive proper medical attention and guidance. This proactive approach reflects UPTM's commitment to creating a caring and supportive campus environment where students' health needs are prioritized.



Sick Bay



Wheel chair



First Aid Kit